

SIKA NIGERIA RETAIL RANGE



BUILDING TRUST



SIKALATEX®

WATER-RESISTANT BONDING AGENT AND MORTAR ADMIXTURE

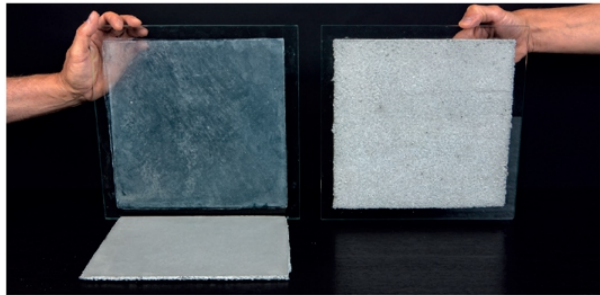
SikaLatex® REDUCES WATER PERMEABILITY OF MORTARS:



Mortar without SikaLatex®

Mortar with SikaLatex®

SikaLatex® ... AND MORTARS EVEN BOND ON GLASS:



Mortar without SikaLatex®

Mortar with SikaLatex®

DESCRIPTION

SikaLatex® is a synthetic emulsion for adding to cement mortars where good adhesion and water resistance are required. It is suitable for use in tropical and hot climatic conditions.

USES

SikaLatex® is a high-quality emulsion that substantially improves the qualities of cement mortars in applications such as:

- Thin Layer patching mortars
- Renders
- Floor screeds
- Concrete repair mortars
- Abrasion-resistant linings
- Tile adhesives
- Masonry mortars



FEATURES

- SikaLatex® is simply added to the mixing water to provide the following properties:
- Increased adhesion
- Reduced shrinkage and cracking
- Great flexibility
- Excellent water resistance
- Increased abrasion resistance
- Improved chemical resistance
- Non-corrosive
- Ready for use SikaLatex® does not re-emulsify, even under highly alkaline conditions

MIXING

Mix SikaLatex® with the correct amount of water to produce a gauging solution. Pour part of the gauging solution into a suitable mixing container.

While stirring slowly, add the cement sand mix to the gauging solution and mix thoroughly until a smooth, uniform and lump-free mix is achieved.

Within the mixing time add additional gauging solution to adjust to the desired consistency.

APPLICATION Bonding Bridge

Thoroughly pre-wet the prepared substrate a recommended 2 hours before application.

Keep the surface wet and do not allow to dry.

Before application remove excess water e.g. with a clean sponge. The surface shall appear a dark matt appearance without glistening and surface pores and pits shall not contain water.

Using a stiff clean brush work the mix vigorously onto the substrate, forming a thin layer filling all unevenness, pits and pores. Always apply following layer of mortar "wet on wet" onto bonding bridge.

Mortar

Mix SikaLatex® with the correct amount of water to produce a gauging solution. Pour part of the gauging solution into a suitable mixing container.

While stirring slowly, add the cements and mix to the gauging solution and mix thoroughly until a smooth, uniform and lump-free mix is achieved. Within the mixing time add additional gauging solution to adjust to the desired consistency.

SIKACERAM[®]-205

HIGH-PERFORMANCE CEMENTITIOUS FLEXIBLE TILE
ADHESIVE (INTERNAL & EXTERNAL; WALL & FLOOR)



DESCRIPTION

SikaCerAM[®] 205 is a cementitious tile adhesive used for permanent fixing of tiles. Suitable for tropical and hot climatic conditions.

USES

Suitable for fixing:

- Wall and floor tiles.
- Absorbing / non-absorbed tiles.
- Interior and exterior use only

FEATURES

- Easy to use, just add water.
 - Excellent workability.
 - Excellent pot life.
- Can be applied directly on cement screeds, concrete or lime mortars.
- Non-Toxic.
 - Suitable for indoor and outdoor application.

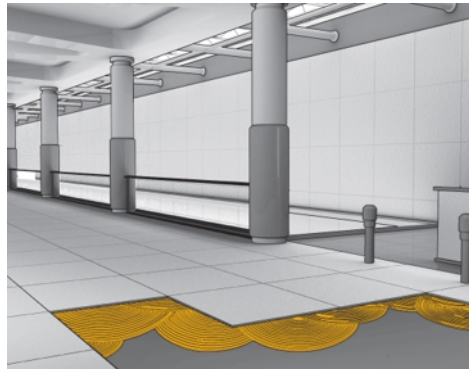
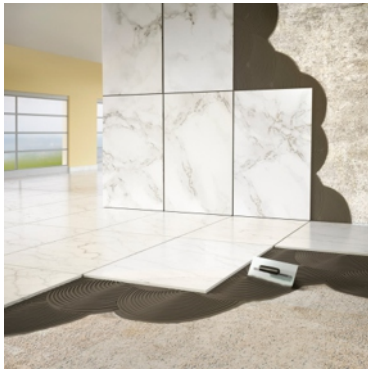
MIXING

Add about 5.5 - 6.0 litres of clean cold water to a clean suitable mixing container. Slowly add the SikaCerAM[®] 205 powder and mix for at least 3 minutes until a homogeneous mix, free of lumps is achieved. Do not mix more SikaCerAM[®] 205 than can be used within the open time. Do not add extra water or other ingredients after mixing!

APPLICATION

Apply SikaCerAM[®] 205 at 3 -10 mm thickness directly to the concrete substrate, using a notched trowel, and spread the mortar evenly over the area to be tiled. Cover only an area that can be tiled within 15 - 20 minutes. Press tiles firmly into SikaCerAM[®] 205 with a twisting action to ensure optimum adhesion.

1. Use 5.5 - 6.0 litres of clean water per 25kg bag.
2. Mix well with a slow-speed drill (maximum 500rpm).
3. Apply with "V"- notched trowels for small tiles.
4. Apply with square notched trowel for bigger tiles.
5. Place the tiles firmly into the fresh adhesive.



SIKACERAM[®]-105

GENERAL PURPOSE, CEMENTITIOUS TILE ADHESIVE.
(INTERNAL WALL & FLOOR)



DESCRIPTION

SikaCerAM[®]105 is a cementitious tile adhesive used for the permanent fixing of tiles. Suitable for tropical and hot climatic conditions.

USES

- Suitable for fixing:
- Wall and floor tiles.
 - Absorbing / non-absorbed tiles.
 - Interior use only.

FEATURES

- Easy to use, just add water.
- Excellent workability.
- Excellent pot life. Can be applied directly on cement screeds, concrete or lime mortars.
- Non-Toxic.
- Suitable for indoor application.

MIXING

Add about 5.0 – 5.5 litres of clean cold water to a clean suitable mixing container. Slowly add the SikaCerAM[®] 105 powder and mix for at least 3 minutes until a homogeneous mix free of lumps is achieved. Do not mix more SikaCerAM[®] 105 than can be used within the open time. Do not add extra water or other ingredients after mixing!

APPLICATION

Apply SikaCerAM[®] 105 at 3 -10 mm thickness directly to the concrete substrate, using a notched trowel and spread the mortar evenly over the area to be tiled. Cover only an area that can be tiled within 15 - 20 minutes. Press tiles firmly into SikaCerAM[®] 105 with a twisting action to ensure optimum adhesion. 1. Use 5.0 - 5.5 litres of clean water per 25kg bag. 2. Mix well with a slow speed drill (maximum 500rpm). 3. Apply with "V"-notched trowels for small tiles. 4. Apply with square notched trowel for bigger tiles. 5. Place the tiles firmly into the fresh adhesive.



SIKACERAM[®]-50

GENERAL PURPOSE, CEMENTITIOUS TILE ADHESIVE.
(INTERNAL FLOOR)



DESCRIPTION

SikaCerAM[®]50 is a cementitious tile adhesive used for the permanent fixing of tiles. Suitable for tropical and hot climatic conditions.

USES

Suitable for fixing:

- Floor tiles.
- Absorbing / non-absorbed tiles.
- Interior use only.

FEATURES

- Easy to use, just add water.
- Excellent workability.
- Excellent pot life. Can be applied directly on cement screeds, concrete or lime mortars.
- Non-Toxic.
- Suitable for indoor application.

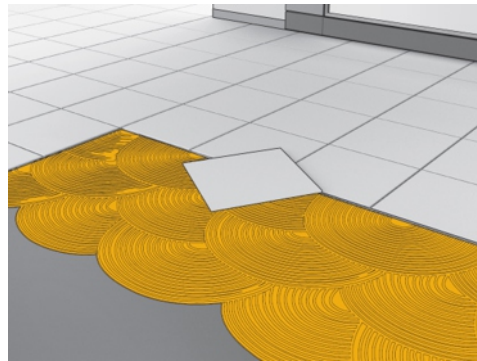
MIXING

Add about 4.5 - 5.0 litres of clean cold water to a clean suitable mixing container. Slowly add the SikaCerAM[®] 50 powder and mix for at least 3 minutes until a homogeneous mix, free of lumps is achieved. Do not mix more SikaCerAM[®] 50 than can be used within the open time. Do not add extra water or other ingredients after mixing!

APPLICATION

Apply SikaCerAM[®] 50 at 3 -10 mm thickness directly to the concrete substrate, using a notched trowel, and spread the mortar evenly over the area to be tiled. Cover only an area that can be tiled within 15 - 20 minutes. Press tiles firmly into SikaCerAM[®] 50 with a twisting action to ensure optimum adhesion.

1. Use 4.5 - 5.0 litres of clean water per 25kg bag.
2. Mix well with a slow-speed drill (maximum 500rpm).
3. Apply with "V"-notched trowels for small tiles.
4. Apply with a square notched trowel for bigger tiles.
5. Place the tiles firmly into the fresh adhesive.



SIKACERAM[®]-650 JOINT

WATER RESISTANT, POLYMER MODIFIED,
CEMENTITIOUS TILE GROUT



DESCRIPTION

SikaCerAM[®]-650 Joint is a 1-component, polymer modified and water-resistant cementitious tile grout for joints of up to 4 mm. It is particularly used in conjunction with SikaCerAM[®] tile adhesives. Suitable for use in hot and tropical climatic conditions

USES

SikaCerAM[®]-650 Joint is suitable for grouting joints in:

- Ceramic tiles
- Suitable for indoor and outdoor application
- Brick, marble, mosaic and stone
- Terrazzo

FEATURES

- Easy to use, requires only the addition of water.
- Long open time (enough time to clean residues from the tiles after application)
- Hardens without cracking or shrinkage.
- Water-repellent and impermeable to many liquids
- Good abrasion resistance
- Very good adhesion to unglazed surfaces
- Available in various colours
- Mold-inhibiting and fungicide
- UV resistant



MIXING

Pour the recommended amount of water into a suitable, clean mixing container. Stir slowly, whilst slowly adding the SikaCerAM[®]-650 Joint powder to the water and then mix thoroughly using a low speed (<500 rpm.) drill mixer until the material is fully homogenous and lump free.

- After mixing, leave the product to stand and 'mature' for a few minutes, then briefly stir again prior to application. The finished mix has a very creamy consistency, is uniformly colored and it is easy to apply and spread.
- For areas requiring only small quantities, these can be mixed by hand.

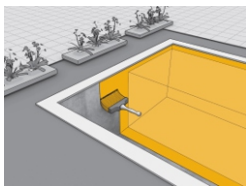
APPLICATION

SikaCerAM[®]-650 Joint is applied using a rubber blade or trowel using cross-hatch techniques, taking care to ensure the joints are filled uniformly across the whole width and along their full length.

- Using the same blade/trowel in a vertical position, remove the excess from the surface of the tiles.
- When the material starts to set, it is possible to begin the initial cleaning step, using a damp sponge. The remaining grout traces on the tile surfaces can easily be removed the next day by wiping them with a clean, soft dry cloth. When SikaLatex[®] or SikaBond DV[®] has been used instead of water in the mix, this additional step should be done immediately after the initial cleaning with a damp sponge.
- Avoid application in direct sunlight and/or in excessive draughts or strong winds.

SIKATOP® SEAL-107

TWO-COMPONENT, POLYMER-MODIFIED, CEMENTITIOUS WATERPROOFING AND PROTECTIVE SLURRY MORTAR FOR CONCRETE.



DESCRIPTION

SikaTop® Seal 107 is a two-component, polymer-modified, cementitious waterproofing and protective slurry mortar for concrete. It is slightly flexible to tolerate fine cracks and is suitable in both interior and exterior applications.

WHERE TO USE

- Horizontal surfaces subjected to light foot traffic (balconies).
- For waterproofing of drinking water, tanks, reservoirs, and clear wells.
- For internal and external waterproofing and damp-proofing concrete, mortar blockwork, and brickwork.
- For the protection of concrete structures against the deleterious effects of deicing salts and freeze/thaw cycles.
- For sealing "hairline" cracks in concrete structures not subject to movement surfaces.
- For interior and exterior waterproofing of basements.

FEATURES

- Improves the watertightness of water-containing concrete tanks, reservoirs, and clear wells.
- Protects against water penetration, yet water vapor permeable (breathable).
- Excellent freeze/thaw resistance.
- Good adhesion to sound, prepared substrates.
- Easy and fast mixing and application.
- Good abrasion resistance.
- Protects against concrete carbonation.
- Can be mixed to slurry or trowel able consistency.
- Improves concrete/masonry appearance.
- Available in concrete gray and off-white.
- SikaTop® Seal 107 is potable water compliant.

MIXING

The consistency of the mix can be altered by reducing the amount of Component 'A' (liquid) to be used. Under normal circumstances, when the full quantities of both components are mixed, a slurry consistency will result. For a trowel able consistency use only 90% of component 'A'. Mix in a clean container by slowly adding the powder component to the liquid component and mixing with slow speed drill and mixing paddle.

APPLICATION

SikaTop® Seal 107 can be applied by trowel, notched trowel, stiff bristle, or spray equipment. Work the material well into the prepared substrate, filling all pores and voids.

For brush consistency: Apply the first coat of SikaTop® Seal 107 with horizontal brush strokes and leave to harden (4 to 8 hours). Apply the second coat with vertical brush strokes.

For trowel consistency: Apply the first coat with a notched trowel and leave to harden (4 to 8 hours). Apply the second coat with a flat trowel.

For spray application: Use a hopper gun spray equipment, a textured sprayer (e.g. Texspray E110c), or a rotor/stator pump equipment. Allow the first coat to harden (4 to 8 hours) prior to the application of the second coat.

SIKAFLEX®-11 FC

ONE COMPONENT ADVANCED POLYURETHANE,
ELASTOMERIC SEALANT/ADHESIVE.



DESCRIPTION

Sikaflex®-11 FC is a one-component, gun-grade, adhesive and sealing compound of permanent elasticity. This dual-purpose material is based on a special moisture-cured polyurethane with an accelerated curing time that meets ASTM C920 Type S, Grade NS, Class 12.5, Use NT, I, M, G, A, O. and Federal Specification TT-S-00230C.

WHERE TO USE

As an elastic adhesive for:

- Cover plates, gaskets and coverings.
- Acoustic ceiling tiles.
- Floor moldings and door sills.
- Light weight construction materials.
- Wood or metal and door frames.
- Roof tiles.

As an elastic joint sealer for:

- Air ducts and high vacuum systems.
- Containers, tanks, and silos.
- Gaskets in openings in walls or floors for ducts, piling, etc.
- Reservoirs or water retaining structures.
- Aluminum fabrication.
- Bolted lap joints.

FEATURES

- Excellent adhesion on all cement-based materials, brick, ceramics, glass, metals, wood, epoxy, polyester, and acrylic resin.
- Fast cure rate.
- Good weathering and water resistance.
- Non-corrosive. Can be painted over with water, oil, and rubber-based paints. (Preliminary tests recommended).
- High durability.

APPLICATION

Recommended application temperatures: 4-37 °C. For cold weather applications, condition the material to 18-24 °C before use. Place the nozzle of the gun into the bottom of the joint and fill the entire joint. Keep the nozzle in the sealant; continue with a steady flow of sealant preceding the nozzle to avoid air entrapment. Avoid overlapping of sealant to eliminate entrapment of air.



SIKALITE®

POWDERED WATERPROOFING ADMIXTURE
FOR MORTAR.



DESCRIPTION

Sikalite® is a powdered waterproofing admixture, which blocks the capillaries and pores in Portland cement/sand mortars preventing the movement of moisture.

USES

Sikalite® is used to waterproof Portland cement/sand renders and mortars for application to:

- Walls
- Facades
- Floor toppings
- Jointing mortars

FEATURES

- Easy to use
- Economical
- Convenient powdered form
- Watertight, but vapour permeable
- Chloride free

MIXING & APPLICATION

1 kg of Sikalite® is added to the dry mix of 50kg Portland cement and sand before the addition of the gauging water. Dry components should be mixed thoroughly before water is added to ensure proper distribution of the Sikalite® throughout the mix.



SIKASHIELD® P13/14/23/24 PE EG

BITUMINOUS WATERPROOFING MEMBRANE



DESCRIPTION

SikaShield® P13/14/23/24 PE EG (3mm or 4 mm) is an APP-modified bituminous waterproofing membrane with a thickness of 3or4 mm.

It is reinforced with a non-woven polyester/fiberglass fabric and is flexible at 0 °C. The top surface is coated with a polyethylene foil, which ensures the bond of the overlying layer. The underside of the product has a burn-off film for easy torch application.

USES

The Product is used as a waterproofing membrane for: Balconies and terraces under a heavy protection layer such as tiles or gravel.

- Flat and sloping roofs under protective layers or ballast
- Car park decks
- Wet areas
- Basements and other below-ground structures Horizontal reinforced concrete slabs, decks, podiums, and protrusions
- Vertical reinforced concrete walls

The Product is used as a Base sheet in multi-layer systems
Please note: The Product is not suitable for roofs permanently exposed to UV radiation.

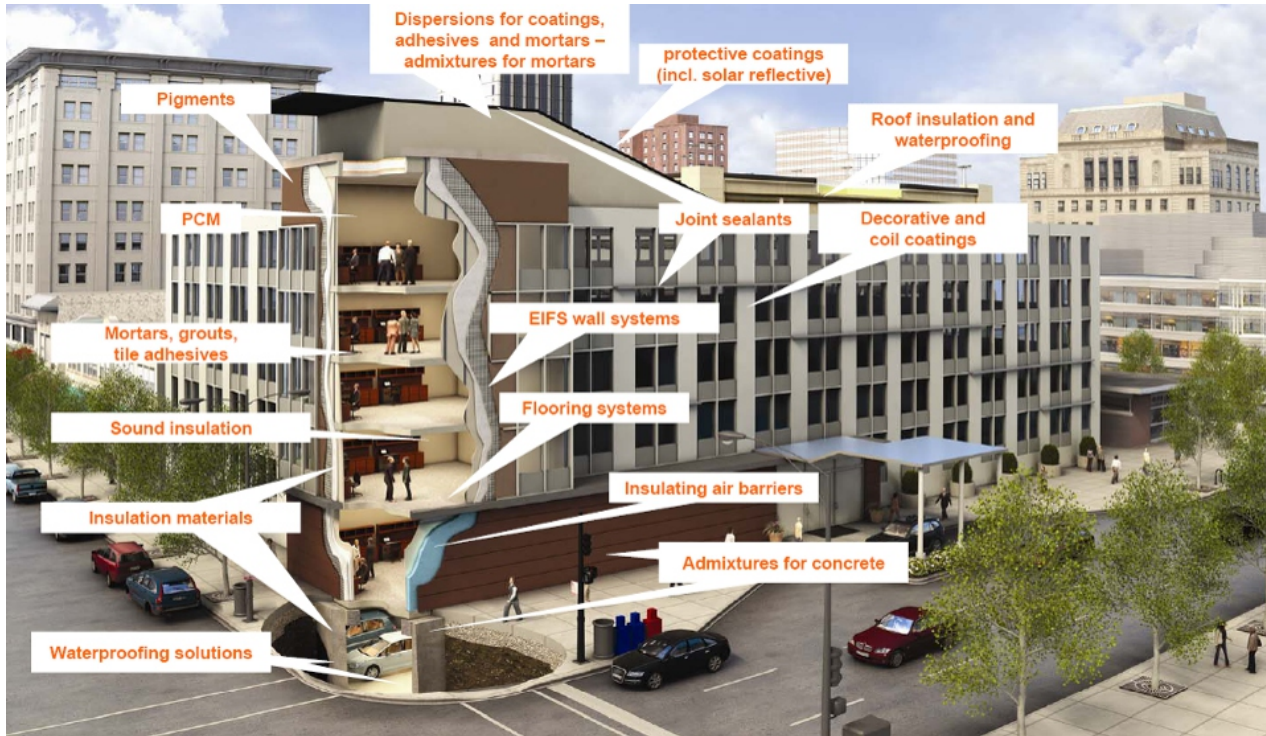
CHARACTERISTICS / ADVANTAGES

- Easy to install by torching method
- Fully bonded
- Good durability
- Good mechanical properties (tensile, tear, shear)

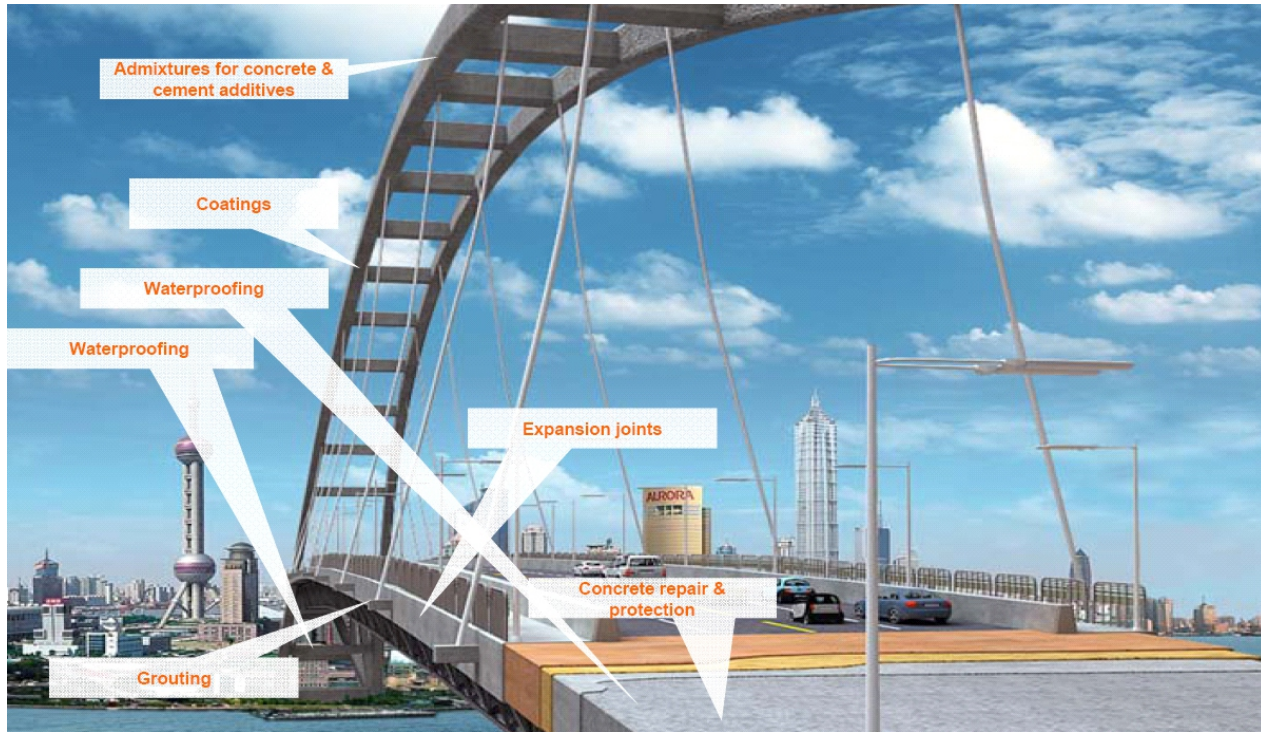
SIKA CHEMISTRY IS EVERYWHERE IN CONSTRUCTION - RESIDENTIAL BUILDINGS



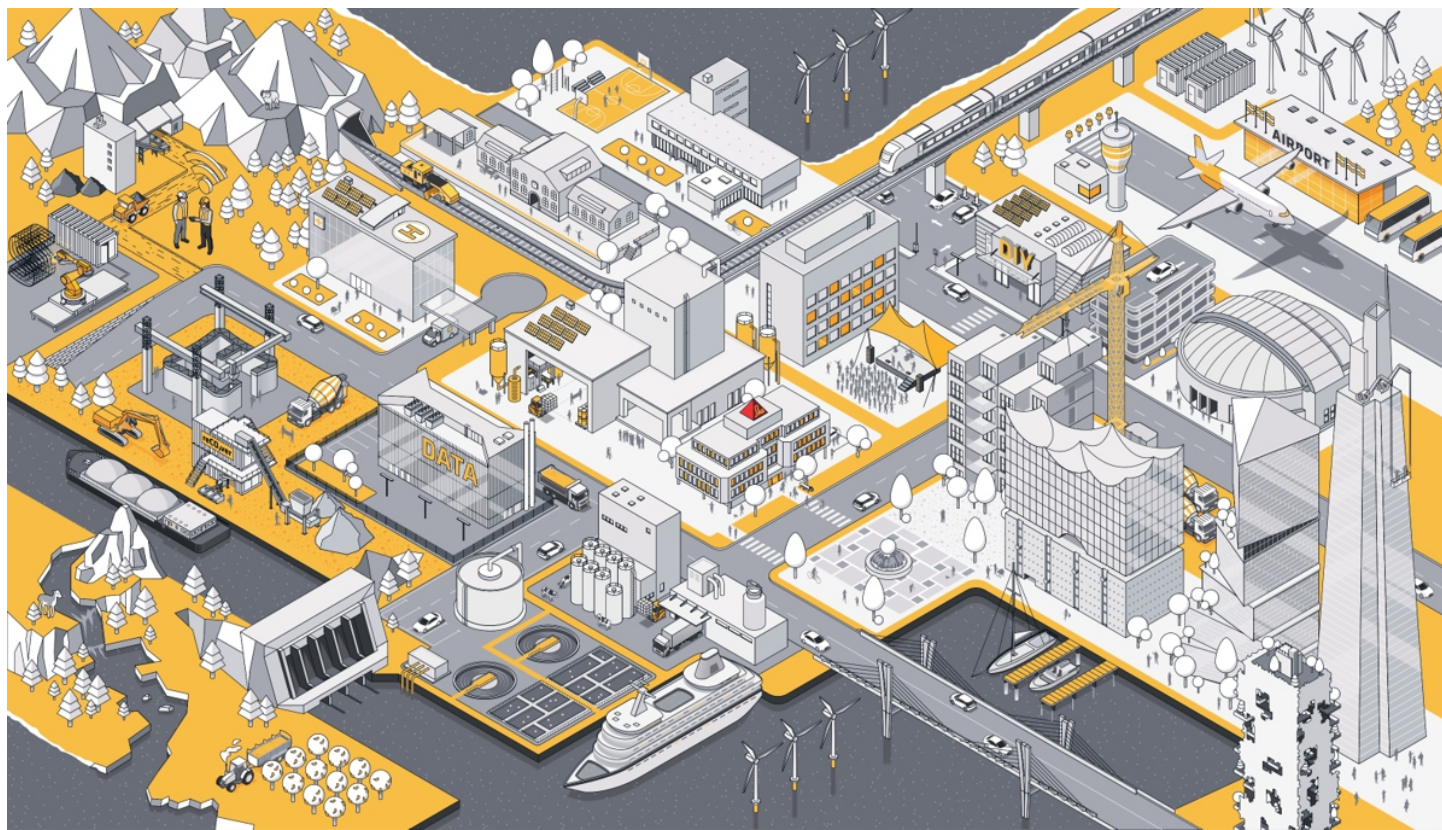
SIKA CHEMISTRY IS EVERYWHERE IN CONSTRUCTION - COMMERCIAL BUILDINGS



SIKA CHEMISTRY IS EVERYWHERE IN CONSTRUCTION - INFRASTRUCTURES



SIKA IS EVERYWHERE



BUILDING TRUST



CONTACT INFORMATION

Sika Manufacturing Nigeria Limited

10, Western Industrial Avenue
Lagos - Ibadan Expressway, Isheri
23401 Lagos,
Nigeria.
customerservice@ng.sika.com
+234 8090442223

Sika MBCC Nigeria Limited

1, Ilupeju Bypass,
Ilupeju, Lagos,
Nigeria
+234 8131748543

VISIT OUR WEBSITE

<http://nga.sika.com/>

CALL:

Okechukwu Anyibuofu: +234 9139385907
Emmanuel Oladokun: +234 8174590691
Abdulrasaq Usman: +234 9062833101